

EDDYFI SOFTWARE LICENSE ACTIVATION, UPDATE & UPGRADE INSTRUCTIONS

FOR :

- ASSIST 3.1 AND OLDER
- LYFT® 2.2 AND OLDER
- MAGNIFI® 4.8 AND OLDER

Agenda

1. Desktop Software

- Update existing hardware key [Click here](#)
- Activate a new license - software key [Click here](#)
- Update existing software key [Click here](#)

2. Embedded Software on Portable Instrument

- Update license [Click here](#)

Desktop Software - Update Existing Hardware Key

Update / Upgrade Existing License

HARDWARE KEY

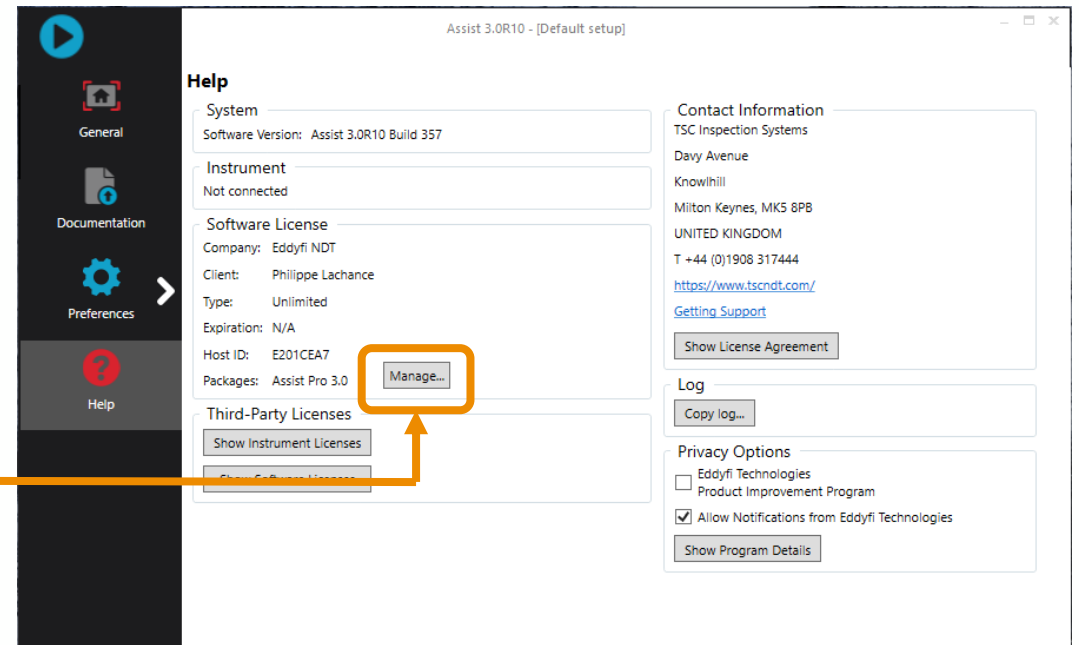
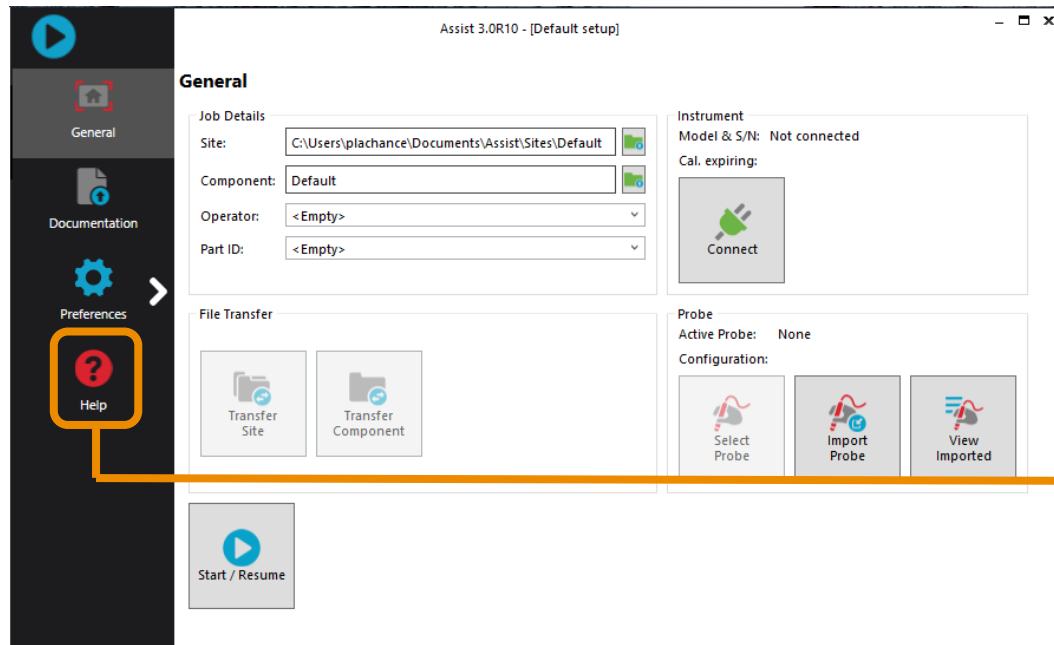
When updating to a more recent version of the software or a higher profile (e.g., STD to PRO profile):

- Once your order for a license update is processed by our team, you will receive a license file (in .zip format which will contain a .txt file) by email
- Save the .zip file sent with these instructions to your workstation
- Unzip the file

Update / Upgrade Existing License

HARDWARE KEY

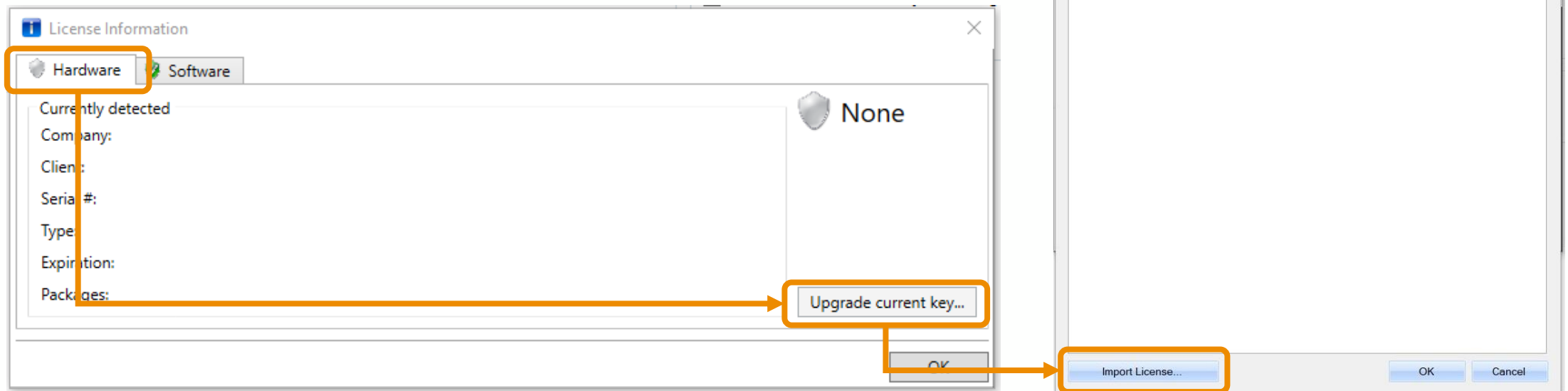
- Launch your selected Eddyfi software
- In the backstage, click on the *Help* menu, then on *Manage*



Update / Upgrade Existing License

HARDWARE KEY

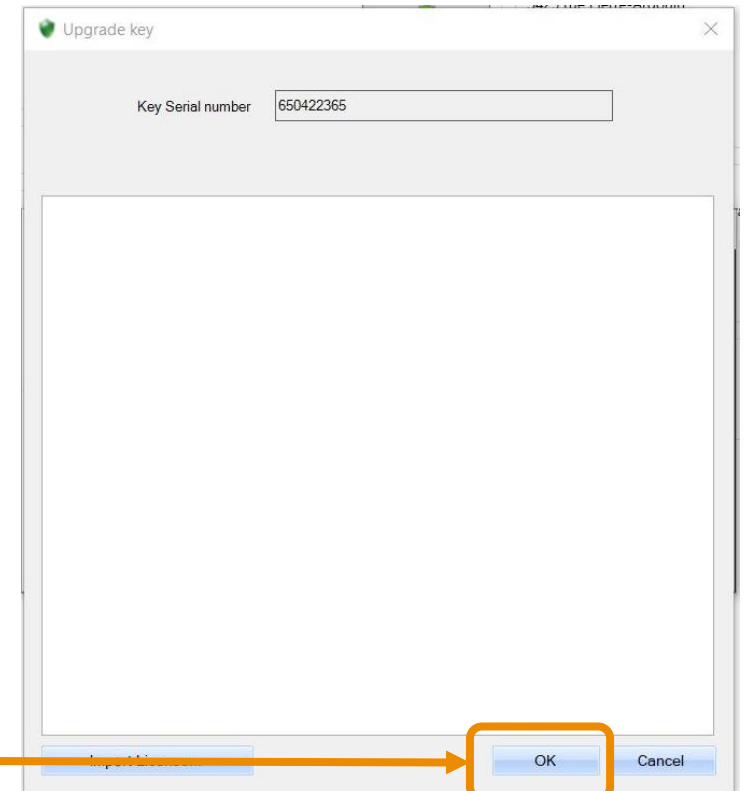
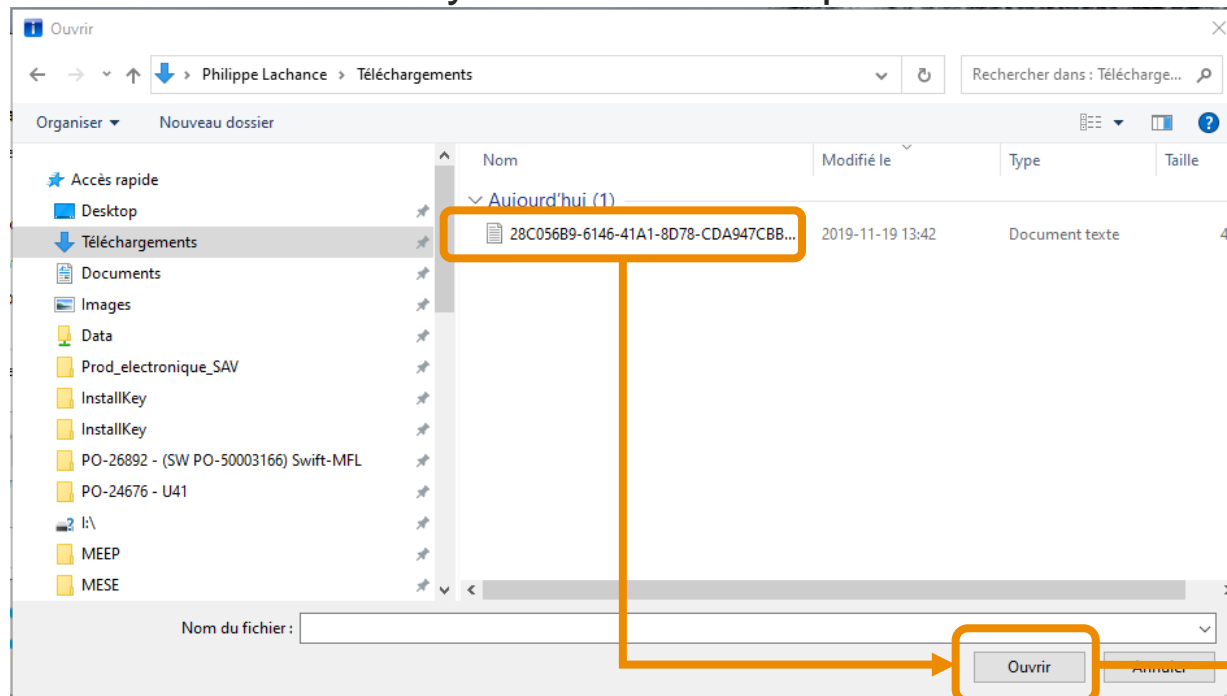
- Select the *Hardware* tab
- Click on *Upgrade Current key...*
- In the next window, click on *Import license...*



Update / Upgrade Existing License

HARDWARE KEY

- Find where the .txt file was unzipped on your computer
- Select the license file (.txt format) and click on *Open*
- Back to the *Upgrade key* window, Click on *OK*
- You hardware key license is now updated

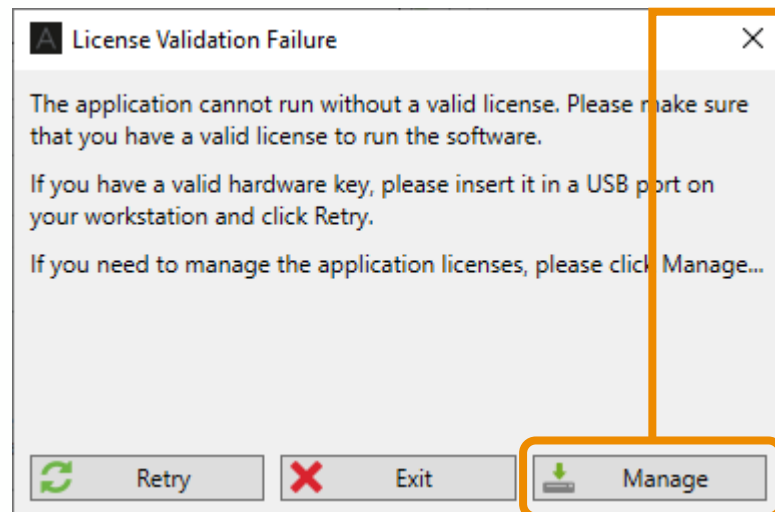


**Desktop Software - Activate a New License -
Software Key**

Activate New License

SOFTWARE KEY

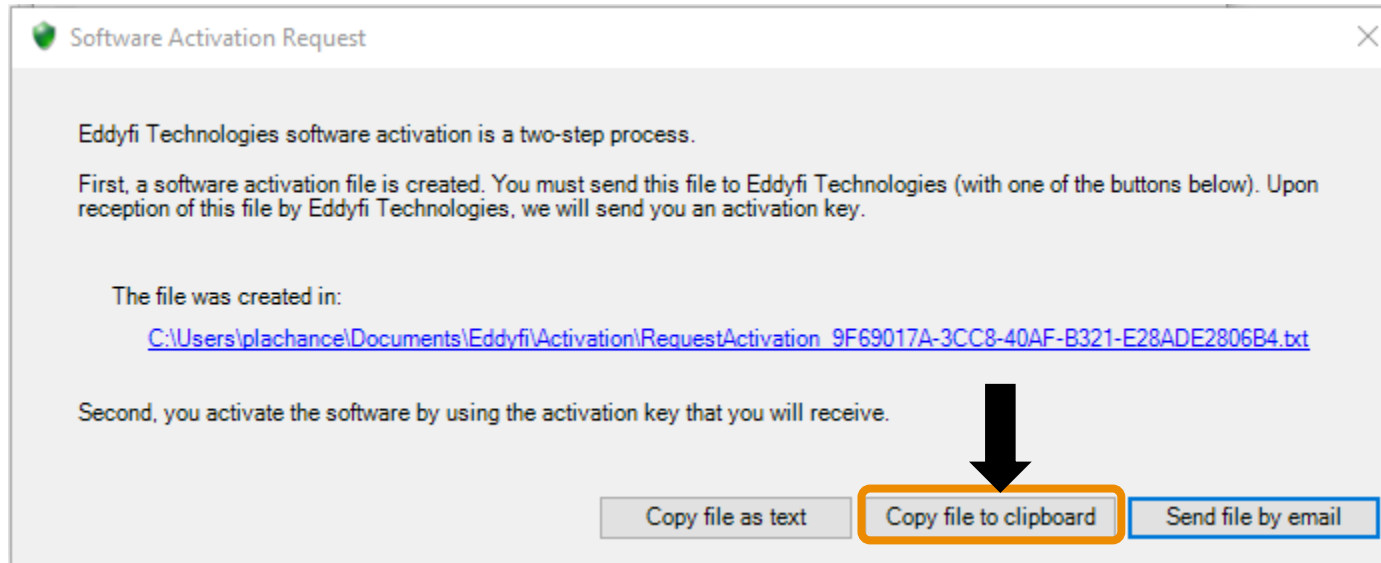
- When no license is installed on a computer, the License Validation Failure window appears
- Click on *Manage*
- Click on *Software*
- Enter your *license ID* (When purchasing a software license, an Eddyfi representative will send the License ID code by email)
- Click on **Request activation**



Activate New License

SOFTWARE KEY

- Click on **Copy file to clipboard**
- ***** It's very important that you do not cancel the current activation. *****

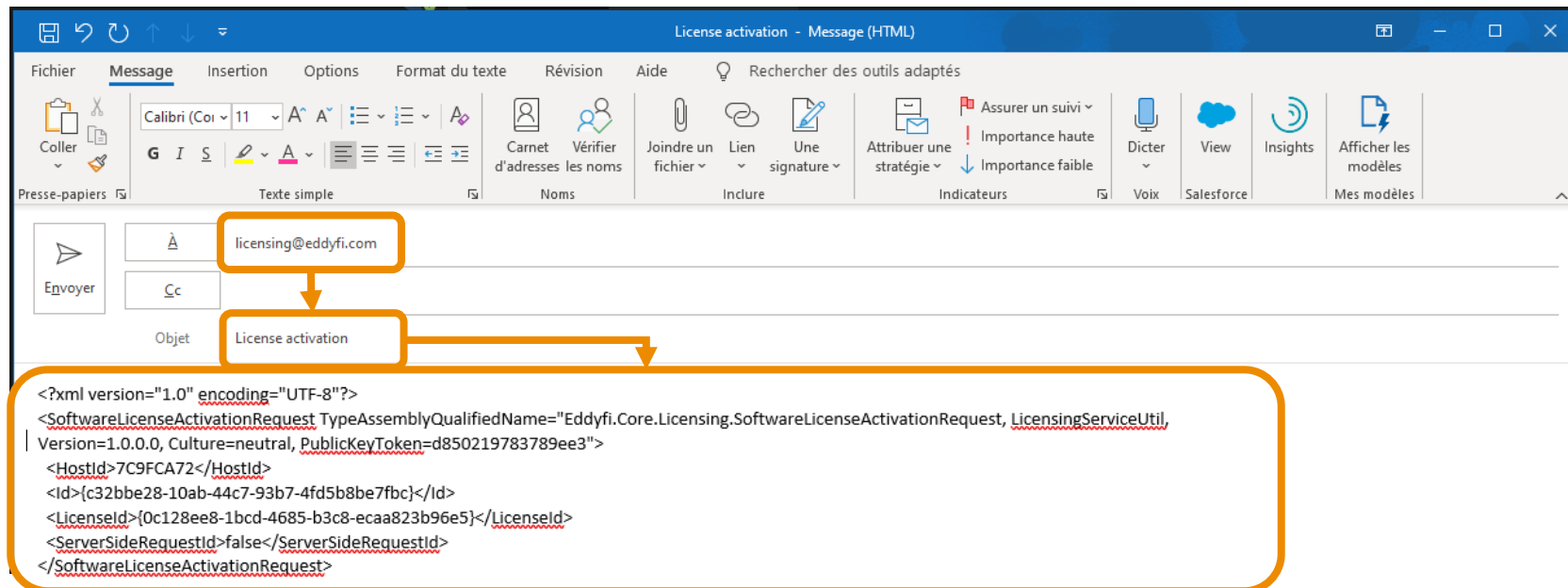


Activate New License

SOFTWARE KEY

- Create a new email with your email application and paste the request activation in the message box
- Send the email to licensing@eddyfi.com, with « License activation » as the subject

Note: You can close your software during this step until you receive your activation code

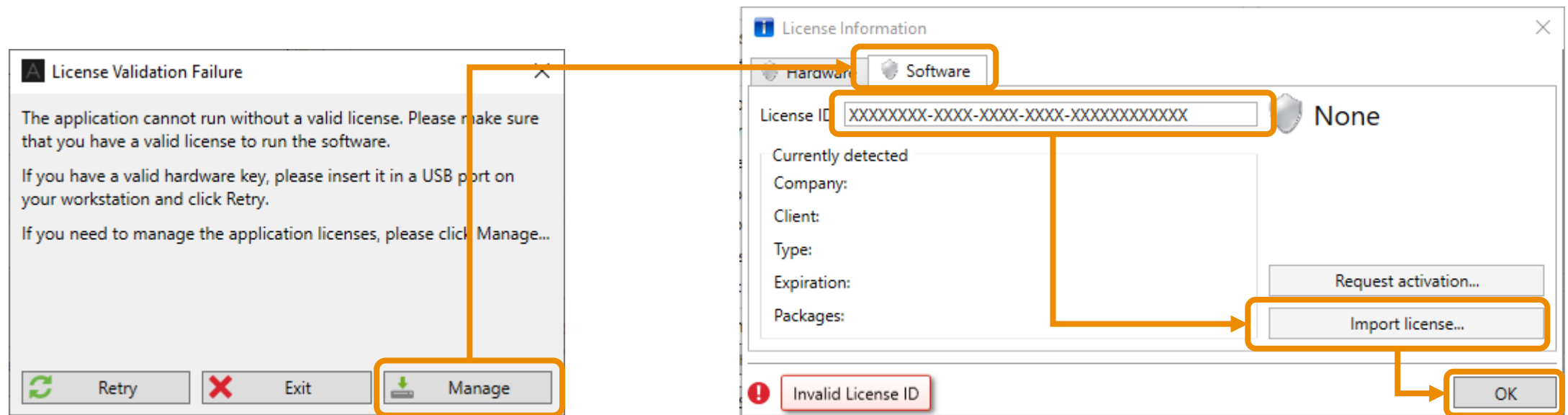


Activate New License

SOFTWARE KEY

Once your request has been validated and processed, you will receive a license file (in .zip format, which will contain a .txt file) by email

- Save the .zip file on your workstation and unzip the file
- Launch your selected Eddyfi software
- Click on *Manage*
- Select *Software* tab, then click on *Import license...*
- Close the License information window by clicking *OK*

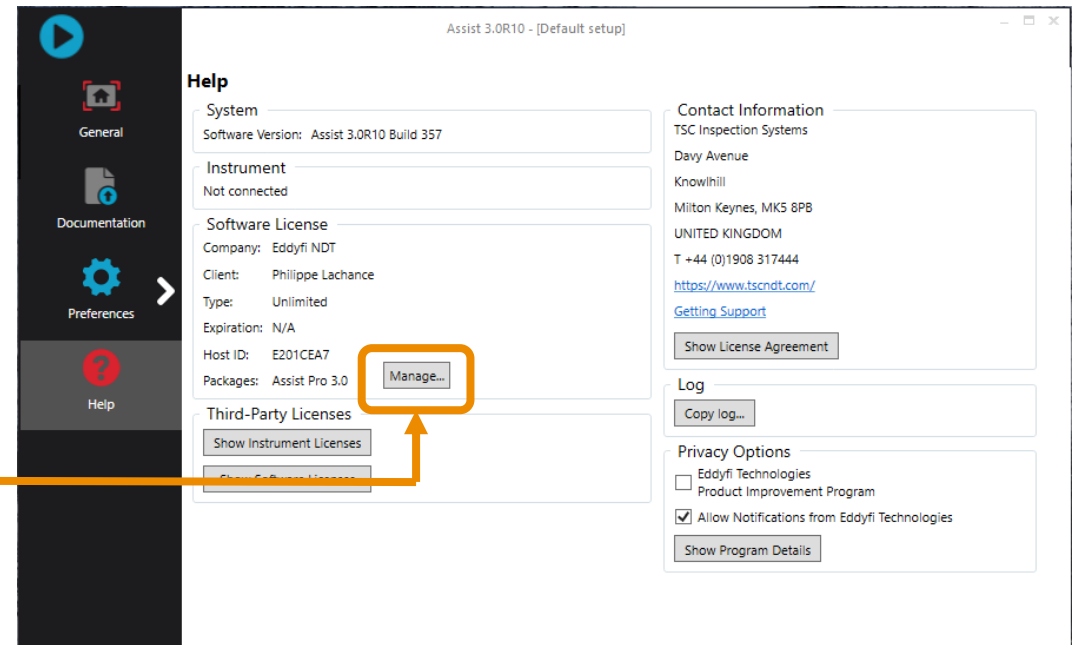
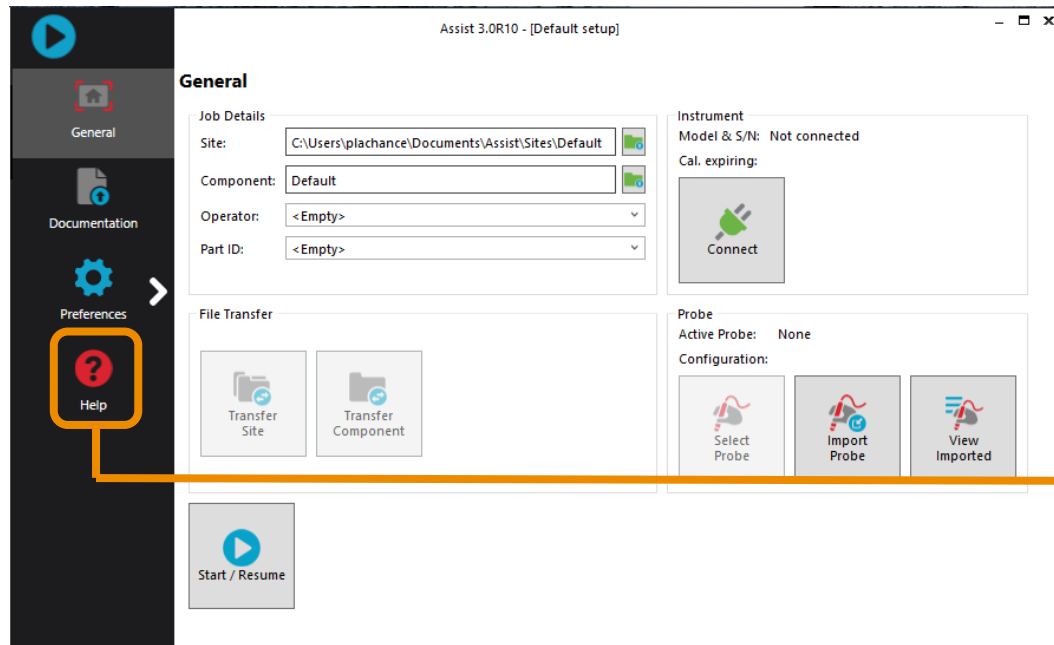


**Desktop Software - Update Existing Software Key –
Software Key**

Update / Upgrade License

SOFTWARE KEY

- Launch your selected Eddyfi software
- In the backstage, click on the *Help* menu, then on *Manage*



Update / Upgrade License

SOFTWARE KEY

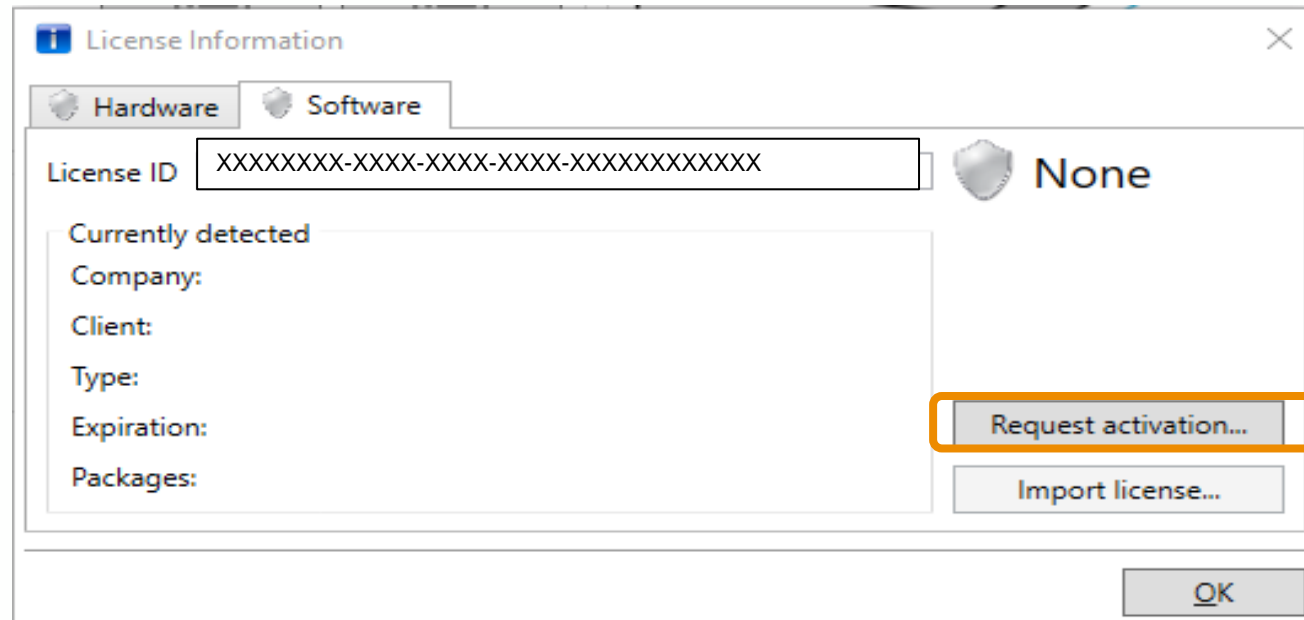
- Select the *Software* tab
- Click on *Release license...*



Update / Upgrade License

SOFTWARE KEY

- Click on *Request activation...*

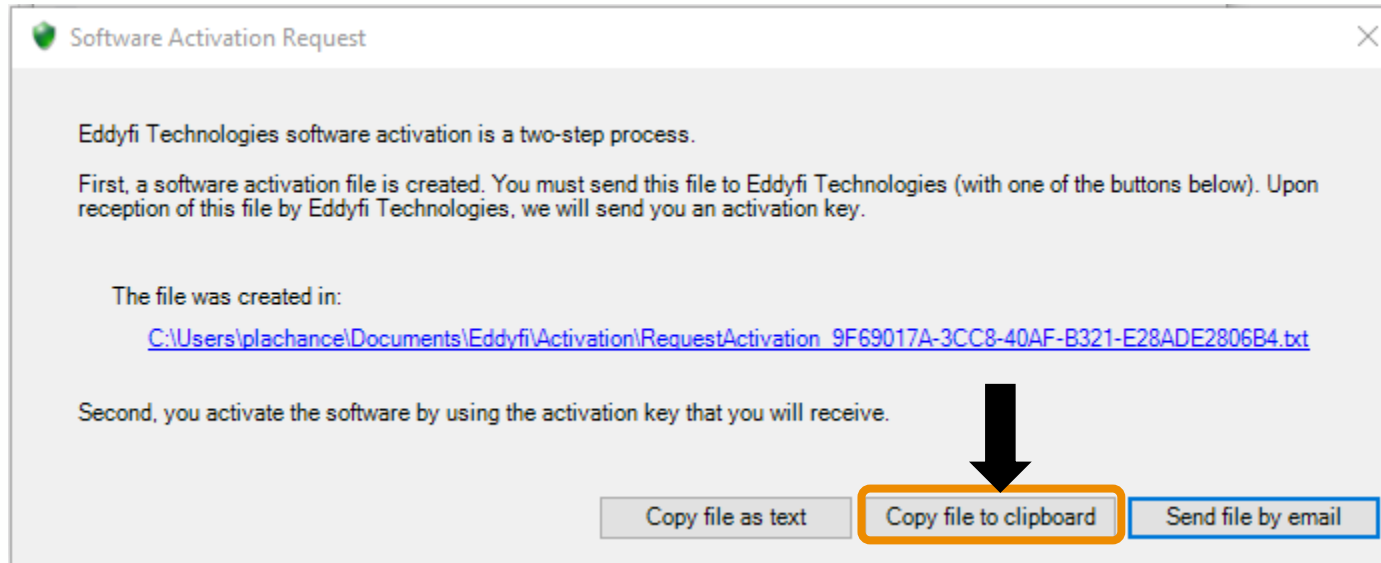


Activate New License

SOFTWARE KEY

- Click on **Copy file to clipboard**

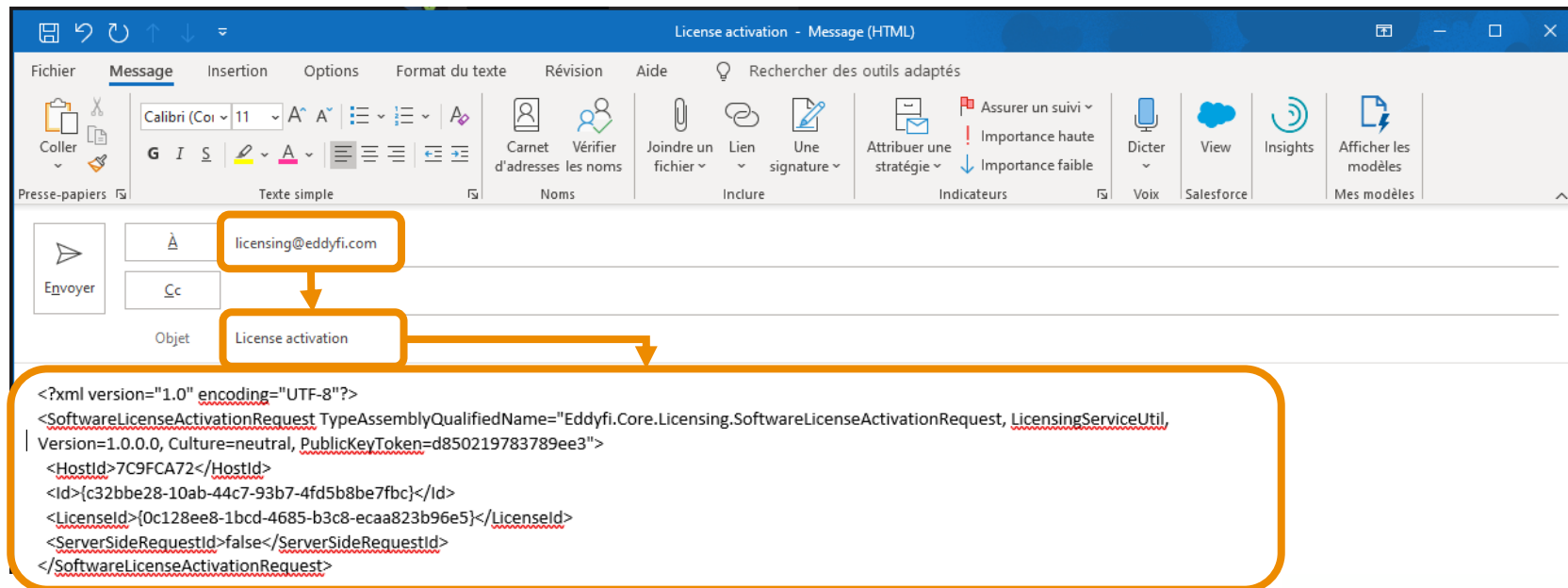
***** It's very important that you do not cancel the current activation. *****



Update / Upgrade License

SOFTWARE KEY

- Create a new email with your email application and paste the request activation in the message box
- Send the email to licensing@eddyfi.com, with « License activation » as the subject
- Note: You can close your software during this step until you receive your activation code

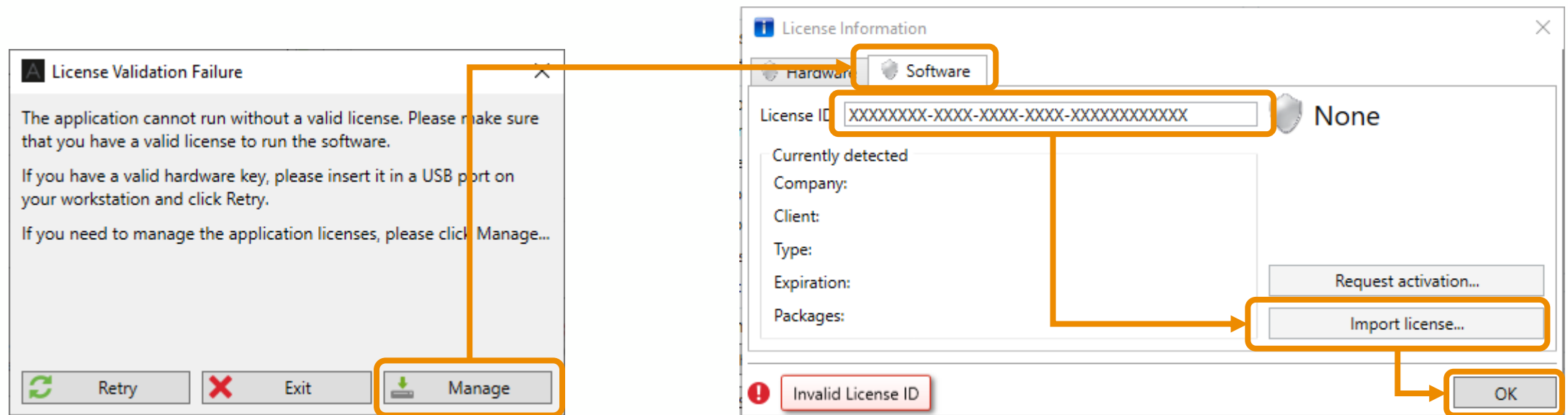


Update / Upgrade License

SOFTWARE KEY

Once your request has been validated and processed, you will receive a license file (in .zip format, which will contain a .txt file) by email

- Save the .zip file to your workstation and unzip the file
- Launch your selected Eddyfi software
- Click on *Manage*
- Select *Software* tab, then click on *Import license...*
- Close the License information window by clicking *OK*



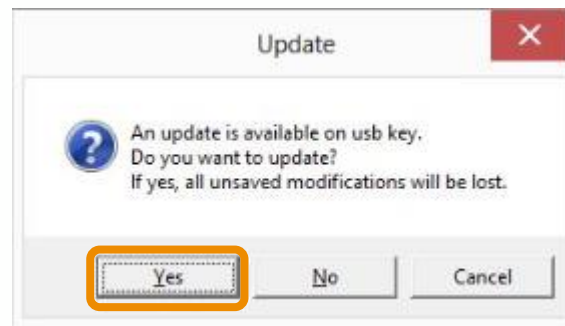
Embedded Software on Portable Instrument – Update License

Update License

PORTABLE INSTRUMENT

Once your request has been validated and processed, you will receive a license file (in .zip format, which will contain a .txt file) by email

- Save the .zip file to your workstation and unzip the file
- Copy the update file to the root of a USB mass-storage device (MSD)
- Turn on your instrument
- Once the instrument is launched, connect the MSD to one of the USB ports on the instrument
- When the below window appears on the screen, click Yes



Update License

PORTABLE INSTRUMENT

- In the dialog box that appears, select the update file
- Click *Update*
- The license updates and the instrument restarts
- Disconnect the MSD

