

M2M CAPTURE

Be the best inspector you can be



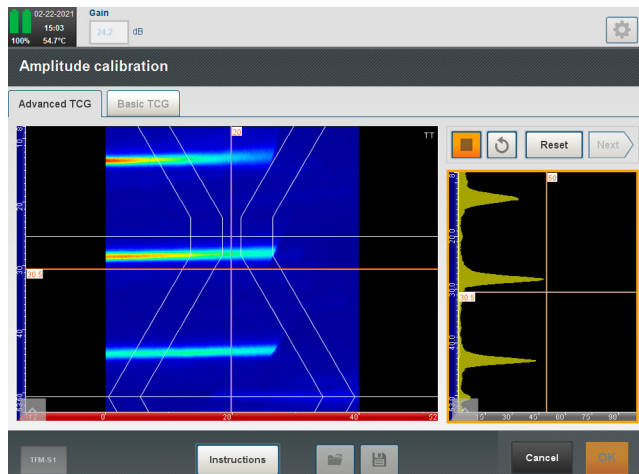
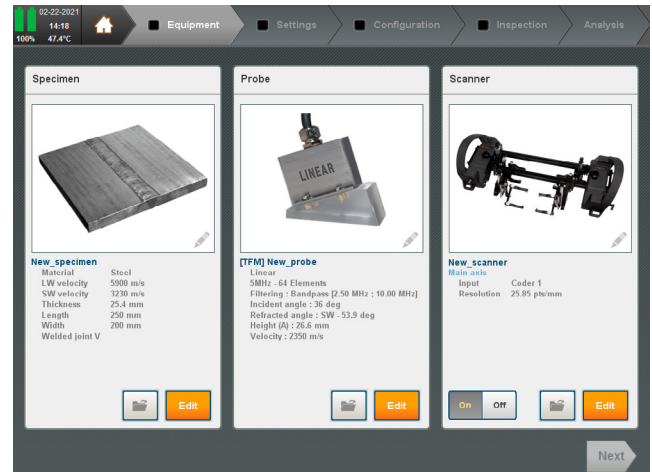
Streamlined PAUT software for
M2M Gekko®, Mantis™, and PC.

ADVANCED PHASED-ARRAY FOR ALL-LEVEL INSPECTORS

Capture™ provides a quick way to improve knowledge and remains focused on speeding up analysis while respecting inspection requirements.

One UT software from setup to reporting

- Application-oriented wizards
- Complete probe, wedge, and scanner libraries
- Custom probe creation, including DLA/DMA probes
- CIVA-based focal law calculator
- Full scan plan for procedure compliance
- Analysis and customizable inspection report

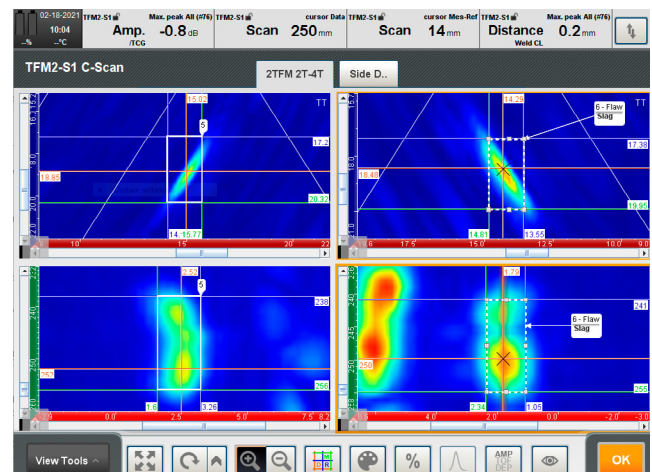


Unique 3-click calibration wizards

- Part and wedge velocity calibration
- Amplitude balancing and dead element check
- Wedge delay + angle calibration - including AOD/COD wedges
- Beam balancing for PAUT sensitivity calibration (ACG)
- Innovative TCG calibration - including TFM

Analysis made simple

- Complete set of views and custom layout edition
- Accurate geometry display for better assessment
- Auto-detection and sizing for corrosion and weld
- Customizable indication table and readings
- Data stitching for corrosion mapping
- Inspection report customization and export (PDF and Excel)

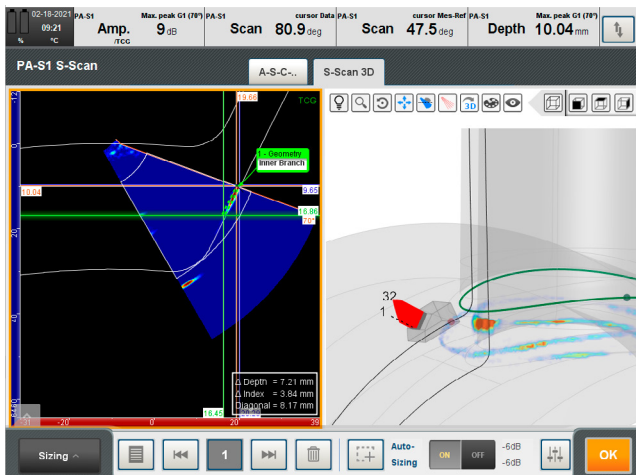
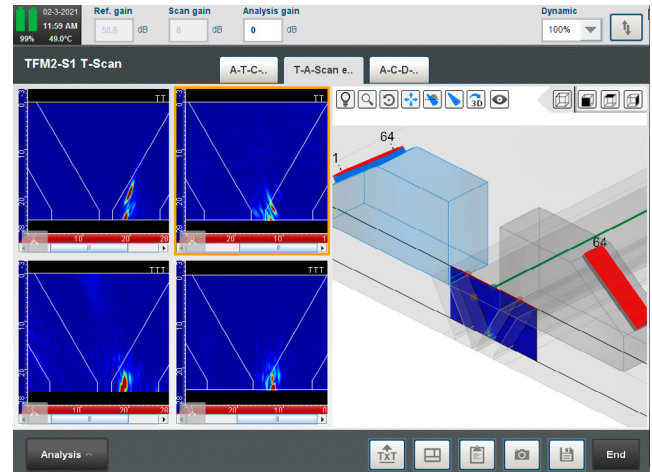


INNOVATION BROUGHT TO THE FIELD

Benefiting from over 8 years of experience with TFM, Capture combines challenging requests from customers in the field with disruptive innovations.

TFM for the field - our DNA

- Multi-probe, multi-group, and multi-mode configurations
- FMC, sparse, PWI transmission modes, and FMC recording
- Handling linear, matrix, DLA, and DMA probes
- Grid verification tool compliant with ASME-V/ISO 23865
- Typical 1 inch weld inspection from both sides up to 130 mm/sec (5 in/sec)

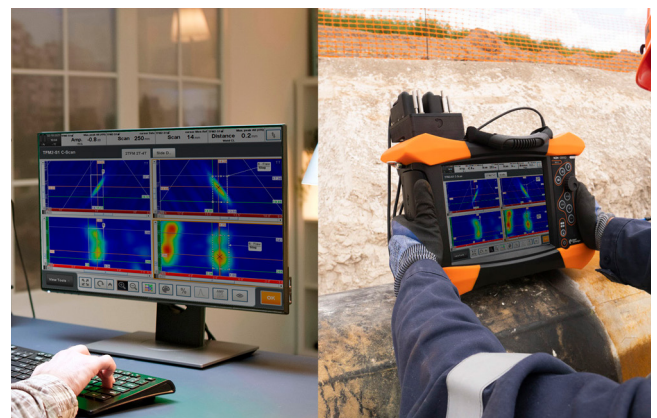


Application-oriented solutions

- Capture Nozzle inspection with 3-axis scanner
- Fillet welds (T, Y) with multi-skip ray tracing
- True 2D CAD component import
- Embedded scanner controls (RMS PA, Lyncs...)
- Paintbrush 2D mapping with 3-axis rotating arm
- Unique Adaptive TFM (ATFM) solution for wavy surfaces

Connect your Capture

- Version manager & remote update from the cloud
- File sharing and remote control through Ethernet/wireless
- Multi-instance Capture PC
- Compatible with analysis software (CIVA Analysis, Ultis, NtPlot...)



CAPTURE SUITE

	GO GEKKO	GO MANTIS	VIEW PC	CPN PC	PRO PC
Setup & Inspection					
UT, PAUT, TOFD techniques	•	•		•	•
TFM technique	•	•		•	•
Plate, Pipe with weld overlay and HAZ	•	•		•	•
DXF overlay import (CIVA, ES BeamTool)	•	•		•	•
Advanced geometries (nozzle with weld overlay, fillet weld, True 2D CAD)	•	•		•	•
Scan plan with multi-skip ray, signal display, angle with bevel and near field	•	•		•	•
Sectorial, Linear and Compound scan	•	•		•	•
Focal LAW import (CIVA)	•	•		•	•
Multigroup settings (up to 8)	•	•		•	•
3-click cal. wizards for all techniques	•	•			
Data acquisition up to 3 encoded axis	•	•			
TFM Toolbox*					
FMC/sparse TFM with Linear, Matrix, DLA, DMA probe	•	•		•	•
PWI/TFM with Linear, Matrix, DLA, DMA probe	•			•	•
Max TFM aperture (channels)	128*	64*		128	128
Multi-group, multi-mode, multi-probe (up to 4)	•	•		•	•
Max number of pixels per group	500k	225k		500k	500k
Envelope display	•	•			
ATFM module	• •				
Grid Verification (Amplitude Fidelity)	•	•			
TCG calibration	•	•			
FMC Recording	•	•			
Data acquisition up to 3 encoded axis	•	•			
Data analysis & Reporting					
Cursor position	•	•	•	•	•
Zoom & Fullscreen	•	•	•	•	•
A-, B-, C-, D-, E-, S-, T-Scan, echo-dynamic views	•	•	•	•	•
Amplitude Dynamic Range - 16 bits	•	•	•	•	•
Top view, side view, 3D view	•	•		•	•
Customizable layout edition	•	•		•	•
Editable readings banner & indication table	•	•		•	•
Offline gate & thickness edition	•	•		•	•
TOFD tools (Wedge Delay, PCS, LW synchro, and removal)	•	•		•	•
Customizable inspection report (PDF/Excel export)	•	•		•	•
Indication auto-sizing – Amplitude (-X dB)	•	•			•
Indication auto-sizing – Thickness (-X mm)	•	•			•
C-Scan stitching and data merging	•	•			•
3D multi-group display & data rendering	•	•			•
Advanced Indication table and indication merge	•	•			•

• According to the Package

• Add-on module sold separately

The information in this document is accurate as of its publication. Actual products may differ from those presented herein. © 2021 Eddyfi Europe. M2M, M2M Gekko, Capture, Enlight and their associated logos are trademarks or registered trademarks of Eddyfi Technologies in the United States and/or other countries. Eddyfi Technologies reserves the right to change product offerings and specifications without notice

www.eddyfi.com

info@eddyfi.com

