



CONNECT YOUR GEKKO & MANTIS TO THE INTERNET

Connecting to the Internet

USING AN ETHERNET CABLE

Preferred connection type : connect the instrument to a network with internet access using an Ethernet RJ45 cable.

Note: Some network protectors may prevent the instrument from accessing the internet.

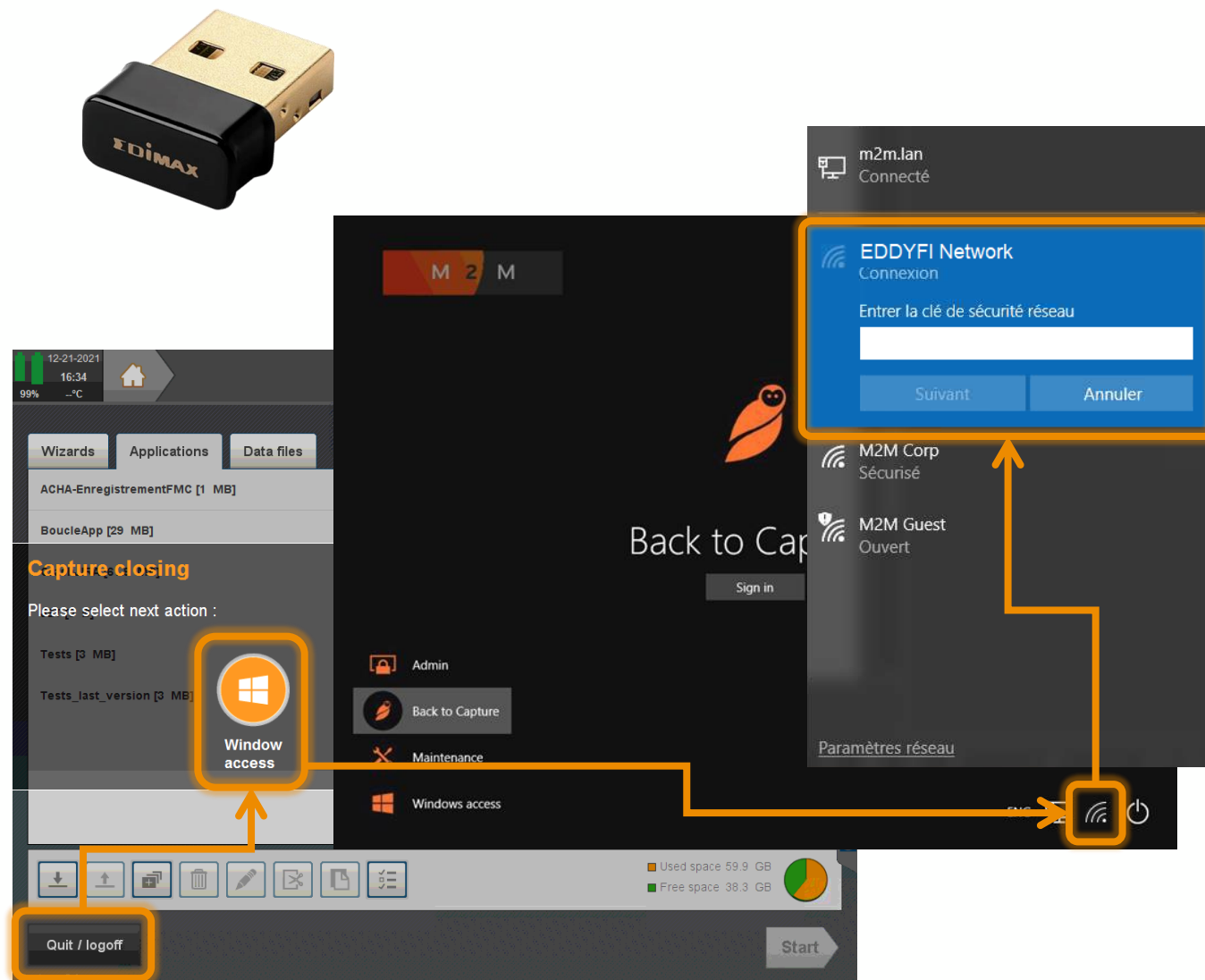
1. Connect an ethernet wire to an outlet of a network with internet access
2. Connect the cable to the connector on the left side of the Gekko or the Mantis
3. Start the instrument



Connecting to the Internet

USING WI-FI DONGLE

1. Plug on the instrument the USB Wi-Fi dongle delivered with the Gekko or the Mantis
2. Start the instrument
3. Press **Quit/logoff**
4. Select **Windows Access**
5. Choose the network you want to connect with, enter the Wi-Fi code
6. Select **Back to Capture** to go back to Capture



For any support, please contact us at
support@eddyfi.com

