



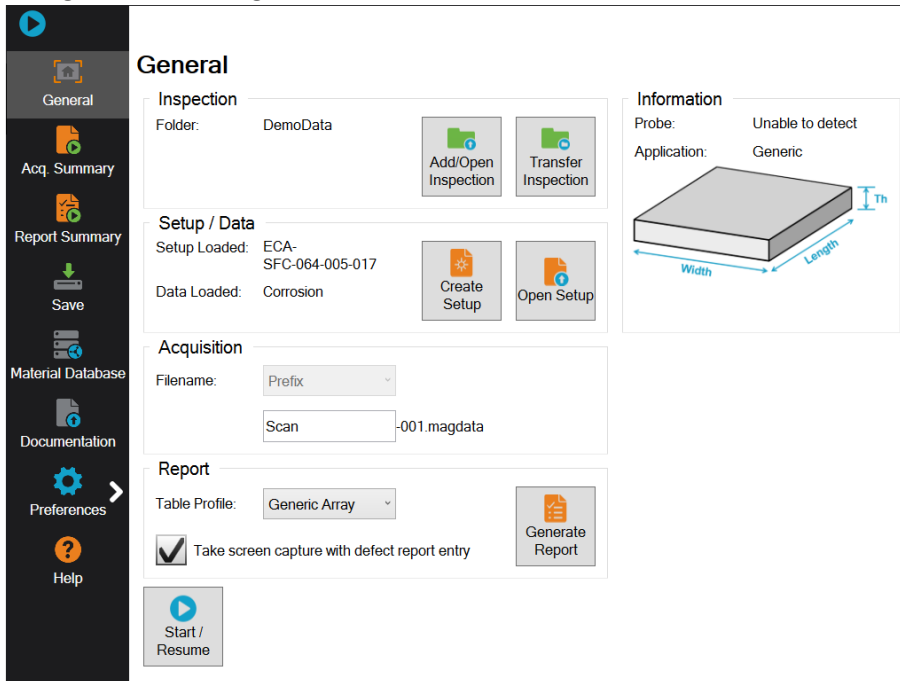
# Magnifi GO 1.2R4 Release Notes

## System Requirements

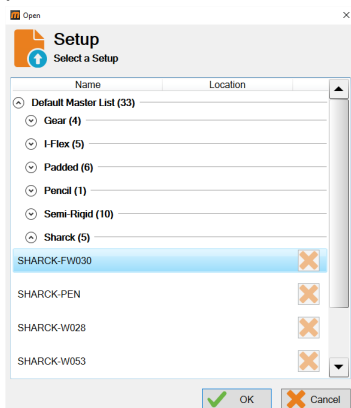
- Reddy® instrument (32, 64, or 96 channels)

## New Features and Improvements

- Reorganized backstage

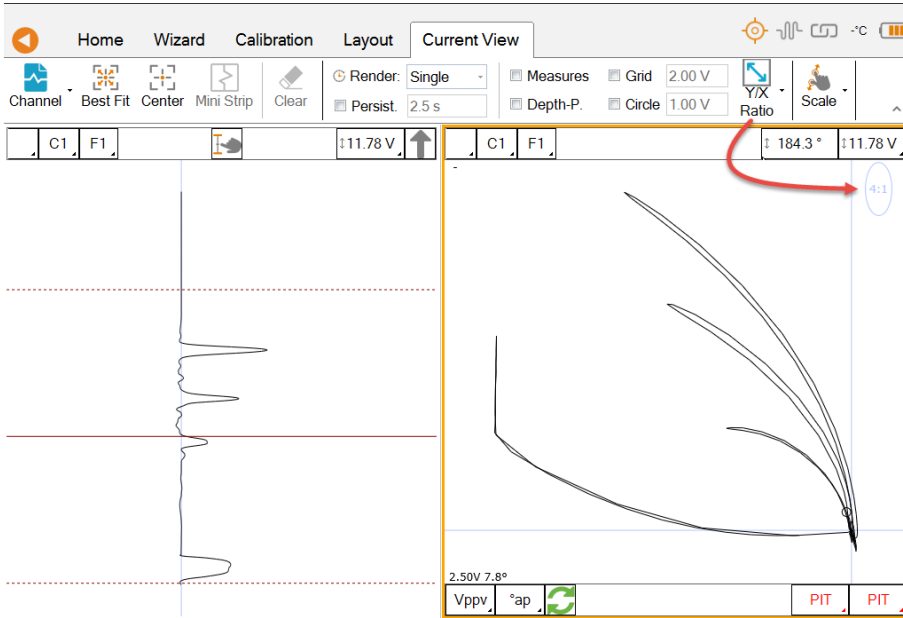


- Better classification of default setup supplied with Reddy.  
Default setup for Reddy are now included in the default master list. All the setups are in the probe model subfolder.

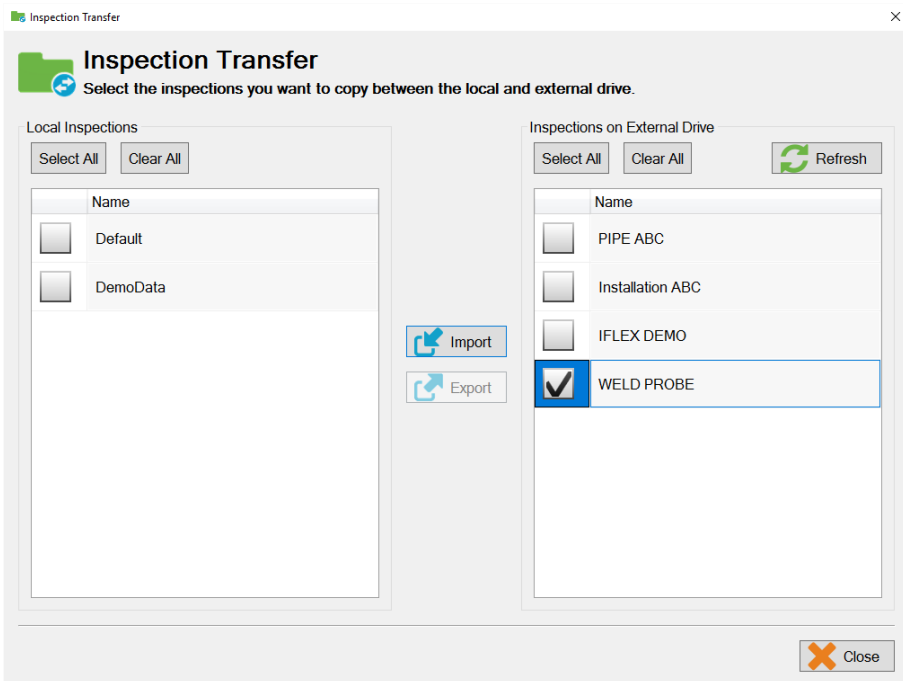




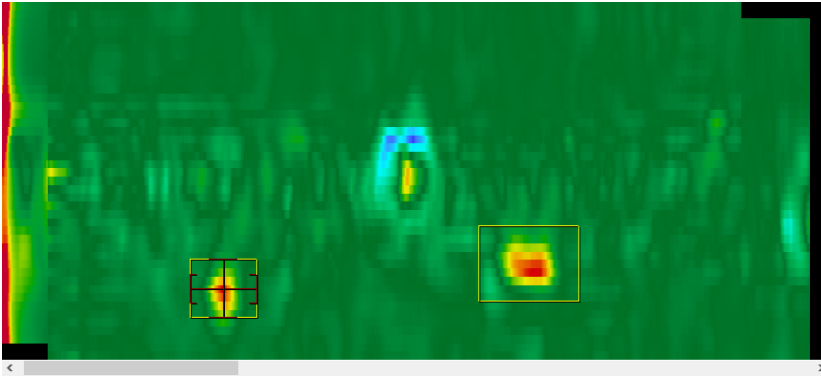
- Support for new Sharck fillet weld probe  
New dedicated setup for this new probe was added to the default master setup list.
- Adjustable X/Y ratio in Lissajous view.  
Sometime called *Y gain* is some software, this function allows users to modify the aspect ratio of Lissajous views. Such a tool is often used to increase the separation between surface defects and the liftoff signal.



- Easier to transfer inspection folders from mass storage device with the **Inspection Transfer** function.



- Indication box added to C-scans when reporting defects



- Sleep mode
- Disable multi-touch display
- Reddy hard drive now shared and accessible over network, through cable

## Modifications to Existing Features

No features were modified in this version.

## Dropped Features

No features were removed in this version.

## Resolved Issues

- Switching from an encoder to a clock-based acquisition (or opposite) did not correctly convert the low-pass filter and median high-pass filter parameters.
- After saving calibration data with **Save Cal. Data As** on the **Calibration** ribbon, the general file name prefix changes to include the characters *CAL-* after the original prefix.
- During data acquisition, in the Lissajous view, some sample points are not displayed, which created empty spaces in the signal's shape.
- The **Resize** view tool in the **Layout** ribbon no longer applies to multi-split views.
- Exporting to Microsoft® Excel® format did not display properly.
- Icons were hidden on the **Current View** ribbon of the Lissajous and strip chart views
- Several corrections to the dark theme.



## Known Issues, Limitations, and Restrictions

- Reduced data saving performance when inspection has large number of files (noticeable effect with more than 350 files).

**Workaround**

Create inspections with less than 350 files.

- Color palette legend at top of C-scan header sometimes not refreshed properly.

**Workaround**

Toggle color palette legend icon off and on again.

- Resetting calibration does not refresh measurement vector displayed in Lissajous view.

**Workaround**

Move main cursor to refresh measurement cursor.