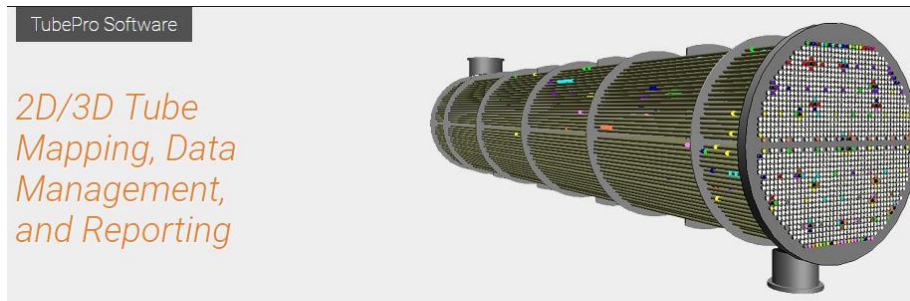


Product Specifications Sheet

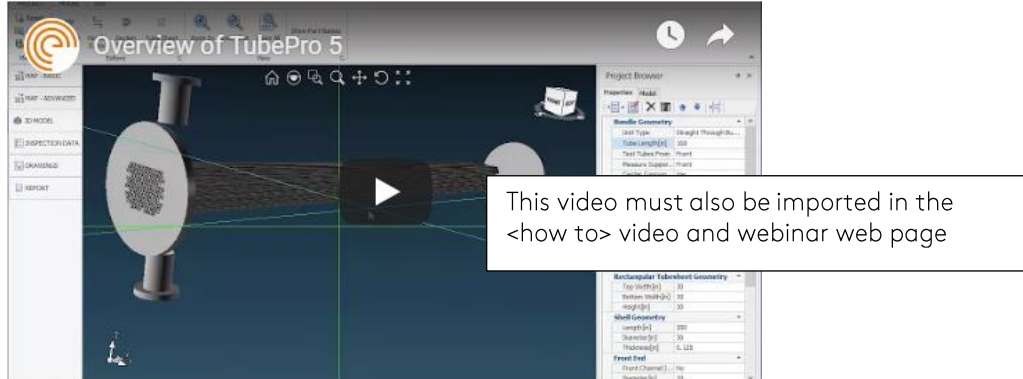


TubePro is the state-of-the-art fruit of ISS' over 30 years of experience in developing thermal, mechanical and inspection software applications for the petrochemical and power generation industries.

Features

- Photographic tube mapping
- Automatically create complex shell-and-tube heat exchanger layouts with very few parameters
- Built-in template reports approved by the oil & gas sector with inspection technique tutorials
- Dynamic user interface easily translated to other languages
- 2D tube mapping and drawing
- One-click 3D modelling
- Powerful import/export functions

TubePro 5 Overview

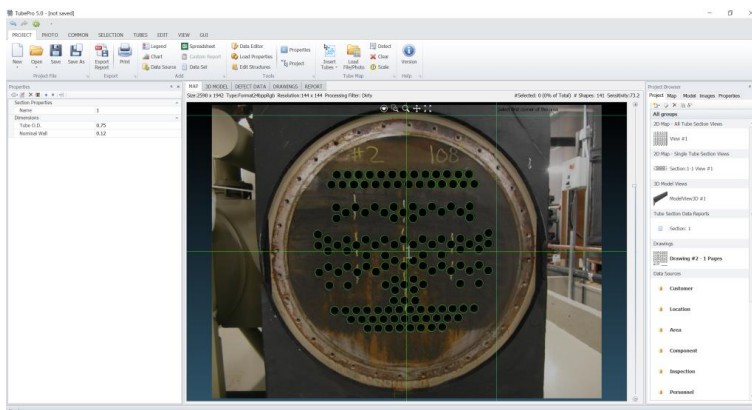


Easy to Use

TubePro was developed with a focus on ease of use. It is easy to learn the tube mapping edition tools featured in the software. You can easily add, delete, and edit tubes, as well as conventional functions such as undo, offer a familiar feel to TubePro. Fully customizable drawing, legends, and report templates offer rapid and consistent reporting capabilities across your organization.

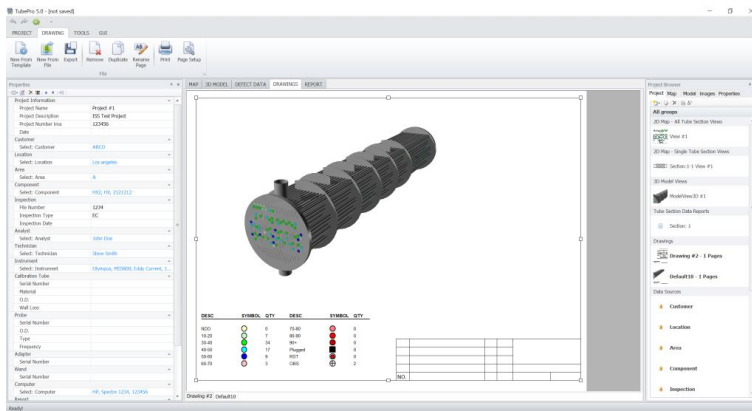
Photographic Tube Mapping

Tube maps can be generated with manual editing tools or proprietary photo recognition technology called SDS. Users simply upload a photo to TubePro and SDS automatically detects tube locations. Multiple areas of tubes can be grouped, organized, and numbered individually.



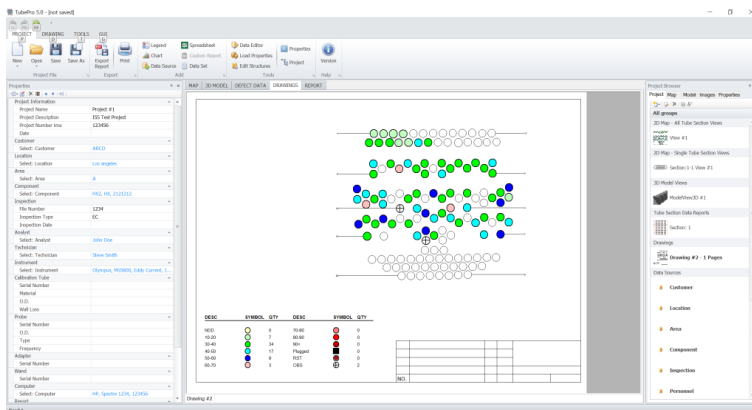
Information Management Database

TubePro 5 has a built-in information management database (IMD) enabling teams and individuals to centrally store and share customers, companies, equipment, inspection, and any other data.



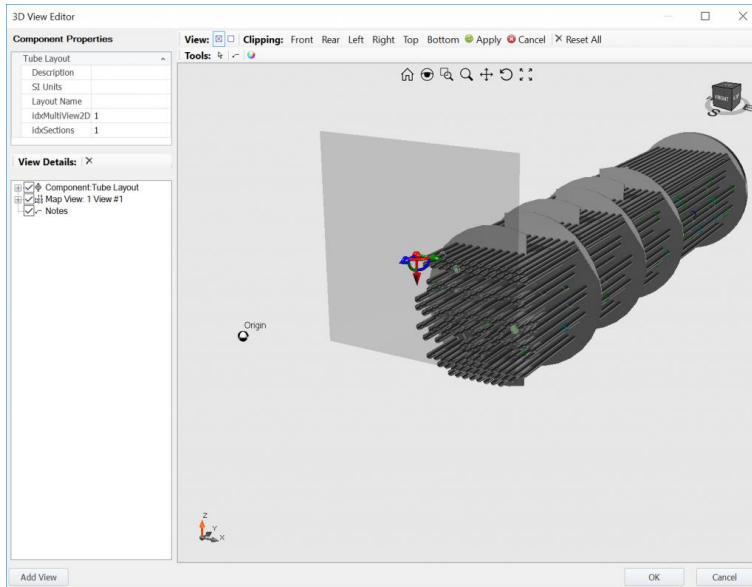
2D Drawing Editor

The drawing editor enables users to reuse existing drawing layouts and easily create new ones with editing tools. Each drawing can have multiple 2D maps, 3D model views, legends, charts, and Microsoft® Excel® spreadsheets.



One-click 3D Modelling

3D models of entire tube bundles, including defects, support plates, headers, and nozzles can be created with a single click. No need for any external CAD system or modelling skills. Multiple views of 3D models can easily be included into reports and be exported to common 3D model files.



Direct Defect Data Import

Defect data can be imported from data acquisitions software by all major instrument manufacturers, Microsoft Access/Excel, and custom formats. The data is automatically formatted and all calculations, charts, legends, and reports are automatically updated without any user interactions. Tube maps, defects in long tubes in 3D models, and data reports are also automatically populated.

Advanced Reporting

Reports can be output as spreadsheets compatible with any popular spreadsheet software. Cells can be updated in real time and easily linked to calculate and specify data to TubePro. Reports can automatically be updated with such information as the number of inspected tubes, the number of obstructed tubes, and any other tube or project-specific data.

